



scforage.org

*Sustainable Grazing Lands: Providing a
Healthy Environment*

We are . . .

A member-driven group focused on educating ourselves and others about:

- Soil health
- Rotational grazing
- Improving pasture productivity
- Farm profitability
- Types of forage suited for your application



Who belongs?

- Folks like you who are raising . . .



Our partnerships

- Academic and cooperative extension programs
- Agricultural agencies
- Conservation organizations
- Seed producers
- Others

We are affiliated with the *American Forage and Grasslands Council* and the *National Grazing Lands Coalition*.

We are primarily funded by NRCS grants



What do we do?

- Pasture walks
- Workshops
- National affiliations
- Regional meetings
- Networking
- Conferences
- Roundtable discussions
- On-farm demonstrations
- Outreach





Pasture workshop on rotational grazing methods





New this year: Forage test plots with Clemson University





In demand: One of our rainfall demonstration trailers





What is the effect of cover crops, different plants on water retention and runoff?





Agency Staff Receiving Training






Simulator set up and ready for demonstration.



scforage.com




[HOME](#) [NEWS](#) [CALENDAR](#) [RAINFALL SIMULATORS](#)

SC Forage and Grazing Lands Coalition

Sustainable Grazing Lands: Providing a Healthy Environment

[JOIN US](#) [NEWS](#)


Page Hook Notifications Insights Publishing To... Ad Corner More Settings Help



SC Forage and Grazing Lands Coalition
@SCFGCLC

Home Services Reviews Shop Offers Photos Videos Posts Events About Community Jobs Info and Ads

Add yourself to the SC Forage and Grazing Lands Coalition Team
Support your Page and build trust with your audience on SC Forage and Grazing Lands Coalition by letting them see who's on your team.
[Add Yourself to Team](#)



Send Message

Like Following Share

Create Post Live Event Offer Job

Write a post

Photo/Video Feeling/Activity Check In

SC Forage and Grazing Lands Coalition
Posted by Gary West · Feb 21, 2016 · 1,124 likes

Search for posts on this Page

Victor Posts

Gary West · December 24, 2015 at 5:38 PM · 11 likes

YouTube

sc forage and grazing lands



South Carolina Forage and Grazing Lands Coalition
1 subscriber

HOME VIDEOS PLAYLISTS CHANNELS DISCUSSION ABOUT

Uploads

Grazing Management to Improve Soil Health
17 views · 3 months ago

Mike Haddy, of the Tennessee Association of Conservation Districts, explains soil health principles and management strategies. Video from the 2014 Fall meeting of the SC Forage and Grazing Lands Co...

Twitter

SC Forage and Gra...
@SCforgrazing

Add your birthday to your profile
Celebrate with balloons on your profile on your big day!

[Get started](#)

Trends for you

See the latest trends of the year! The Strategy in Real-time Extension
#EconomicsTechnology



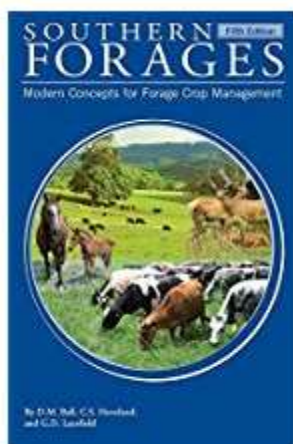
Become a member today

- **Only \$25** annual for individuals, businesses or agency
- **Only \$5** annual for students



Membership bonus

- A FREE copy of *Southern Forages, Modern Concepts for Forage Crop Management* while supplies last.



Southern Forages: Modern Concepts for Forage Crop Management Feb 12, 2015
by Donald M. Ball and Carl S. Hoveland

Paperback

\$99.80

Only 14 left in stock - order soon.

More Buying Choices

\$83.80 (13 used & new offers)

Paperback

\$4.86 (22 used & new offers)

Other Formats: Hardcover



Membership bonus 2

- A FREE SCFGLC baseball cap while supplies last.



*Winner of the 2017 President's Award
from the
American Forage and Grasslands Council*



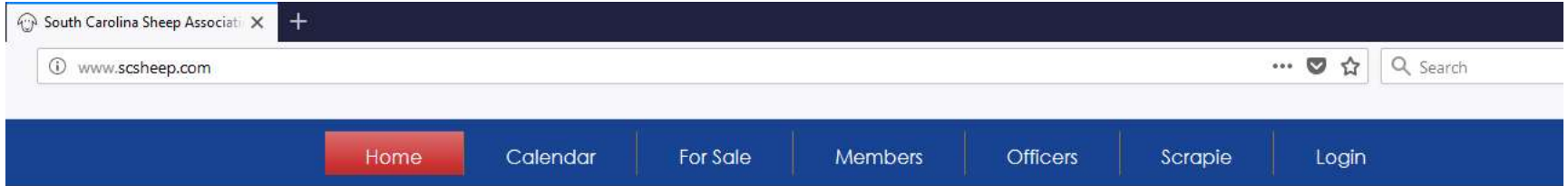
South
Carolina



South Carolina Sheep Industries Association

To carry on educational and promotional work to foster and encourage the breeding, raising, showing and marketing of sheep and sheep products

www.SCsheep.org



South Carolina Sheep Association

Welcome to the South Carolina Sheep Industries Association. Our goal is to carry on educational, promotional work to foster and encourage the breeding, raising, showing and marketing of sheep and sheep products.



Upcoming Events

[Homesteading class. How to Start a Family Farm on limited Acreage](#)

[2 dates- October 13 from 9:30-12pm or October 27th from 2-6pm.](#)

classes include fences, feeding, choosing sheep and more.

[Cheese Making Classes using Sheep milk-](#)

[Family Cheese Making. October 13 from 1:30pm- 3pm](#)

[Adults Cheese Making class. October 13th from 3:30pm-5:30pm](#)

All classes above are located at Whispering Pines Farm in Mauldin, SC,

email Dairysheepdeb@gmail.com or go to www.wpstables.com

[Whispering Pines Farm Dairy Sheep Show. Sunday in November from 1pm-5pm.](#)

For more information, go to www.wpstables.com

American Sheep Industry Association



ABOUT JOIN DONATE SHOP    



NEWS EVENTS ISSUES PRODUCER EDUCATION & INFORMATION RESOURCE CENTER CONTACTS

Click here for the newly updated
Sheep Care Guide



LET'S GROW PROGRAM



2018 STATE
BROCHURE



WILDLIFE SERVICES



LEGISLATIVE
ACTION CENTER



AMERICANWOOL.ORG









CLEMSON[®]

LIVESTOCK POULTRY HEALTH

Patty Scharko, DVM, MPH, DACVPM
Field and Extension Veterinarian
Livestock Poultry Health
Clemson University
Columbia, SC





SC Sheep Industries Association

- **Debbie Webster, SCSIA president**
 - www.scsheep.org
 - Dairysheepdeb@gmail.com
 - 864-360-3222 cell text please





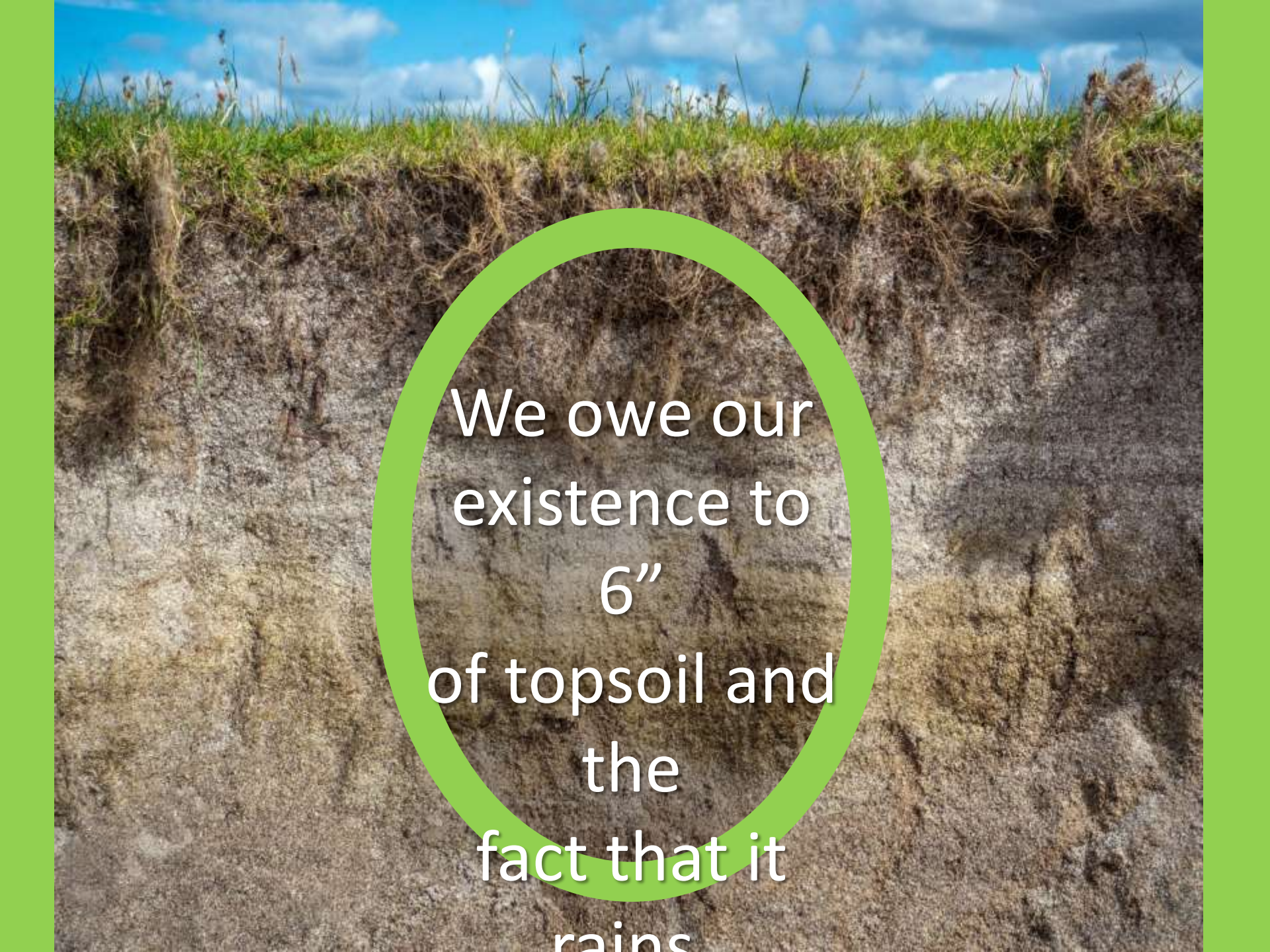
Maria Helms

District Manager
Calhoun County Soil and
Water Conservation
District

Presenter

Maria.helms@sc.nacdnet.net





We owe our
existence to
6"
of topsoil and
the
fact that it
rains

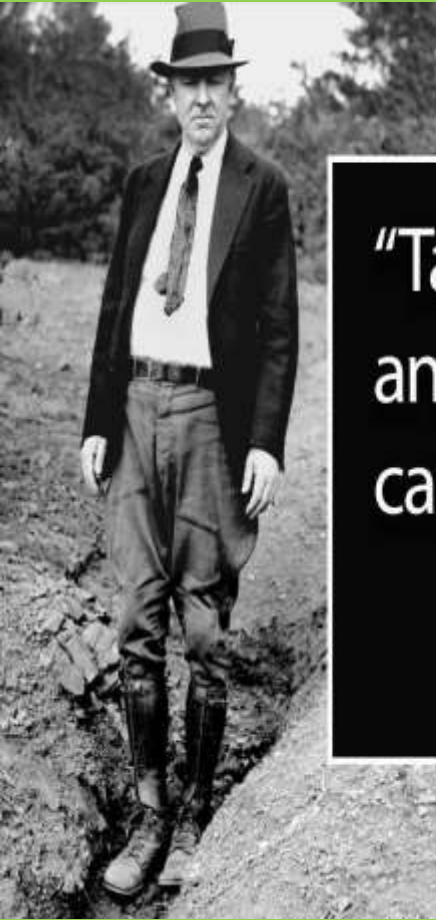
The Roots of Conservation Districts

Conservation Districts were a product of the worst man-made ecological disaster in American History. Since 1937, Conservation Districts have worked to promote and establish the wise use of soil and water resources on the land.



The Dust Bowl





“Take care of the land
and the land will take
care of you...”

Hugh Hammond Bennett

A Conservation Pioneer

Hugh Hammond Bennett

- The “Father of soil conservation”
- Led the soil conservation movement in the United States
- Founded and headed the Soil Conservation Service, a federal agency now referred to as the Natural

District

The Federal Government gives States the authority to start conservation districts and has required districts to be in place for USDA program funding.

subdivision of State Government
In South Carolina, each county has a conservation district.

- ✓ Board with 3 elected and 2 appointed members
- ✓ Monthly open board meetings
- ✓ No regulatory authority
- ✓ Ability to address unique needs of county

3000+ nationwide



District Funding

Each district in South Carolina is funded by the State through DNR and by the individual counties. Additional funding is provided through affiliate membership programs, grants, and services from other organizations.



State



Grants



Affiliate
Memberships

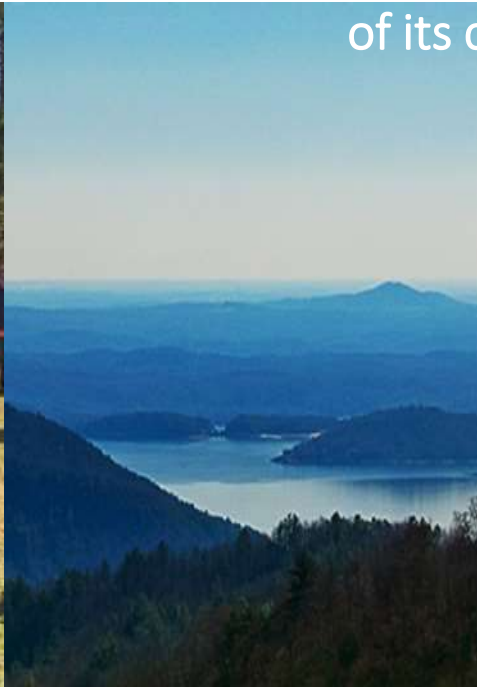


County

District Programs

Each district's programs vary depending on the needs

of its citizens



NRCS

- Cost share programs from Federal Funds
- Workshops

State

- Watershed Boards
- PL566 dams
- Aerial photographs

County

- NPDES Permit mandates
- Environmental achievement awards

Citizens

- School education programs
- Environmental grants
- Envirothon

No-Till Drill and Other Equipment

- Many Districts have farm implements such as no-till drills available for low-cost rental to encourage conservation practices. Check with your local District to see what implements are available. If you are




Example: Anderson County

- Recently completed a rain barrel sale
- Educates citizens on soil health
- Oversees Watershed Boards:
 - Big Creek
 - Broadmouth Creek
 - Brushy Creek
 - Three & Twenty Creek

- Meets second Friday of
at 8:30 am, at the **Anderson Soil & Water
Conservation District**
District Office in
Anderson



Example: Greenville County

- Conducts stormwater pollution education for county
- Public outreach for the Reedy River Water Quality Group
- Technical advice to county citizens on erosion, drainage, and conservation issues
- Oversees 3 watershed boards
- Maintains 10 dams in the county
- Meets  Tuesday of month at 9:30 am, at the





Contact
Your Local
Soil and
Water
Conservation
District

Landowner Services
SC Farmer Resource Rodeo
February 7, 2019

Russell Hubright
Forest Management Chief



Types of Assistance Provided

- **General forestry advice**
- **Management plans**
- **Help with I&D problems**
- **Storm recovery**



General Forestry Advice



- Timber price information

www.trees.sc.gov



General Forestry Advice



- **Loblolly or longleaf?**
- **Financial returns**



Forest Management Plans



Forest Management Plans

Derrick Outen Tract
Chesterfield County, SC



1 inch = 660 feet



Landowner: John Derrick Outen
852 Peach Orchard Rd
Jefferson, SC 29718

Reforestation Acres: 47.111
Lat: 34-40, Long: 80-22
Digital Photo: 2011 Natural Color

Map by: Justin Smith
SC Forestry Commission
6/14/2012



Forest Management Plans

Forest Stewardship Plans



- **Comprehensive plan**
- **Multiple objectives**
- **Timeline of activities**
- **Help from specialists**



Forest Management Plans

Cost-Share Plans - FRP

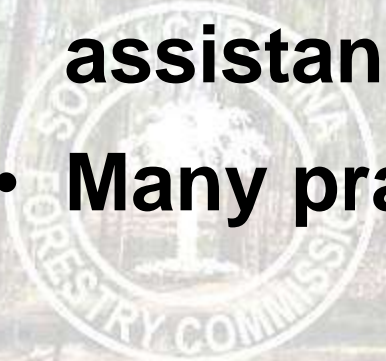
- **State program**
- **4:1 match from industry**
- **40% cost-share**
- **Reforestation**



Forest Management Plans

Cost-Share Plans - EQIP

- **Federal program - NRCS**
- **75% cost-share**
- **SCFC – technical assistance**
- **Many practices**



Forest Management Plans

Cost-Share Plans - CRP

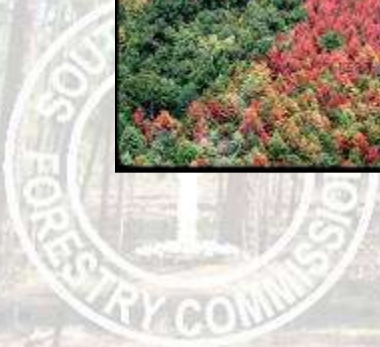


- **Federal program - FSA**
- **50-90% cost-share**
- **SCFC – technical assistance**
- **Rental payments**



Insect & Disease Control

- **Diagnosis**
- **Expert help**
- **Prevention**



Storm Recovery

- **Damage assessment**
- **Recovery assistance**



Other Assistance

- **Firebreak plowing**
- **Prescribed burning**
- **Standby assistance**



Other Assistance

- **Equipment Rental**
 - tree planters, drum choppers, dibbles
- **Timber Marking**



BMP Courtesy Exams



Best Management Practices

- Courtesy exams
- Training for loggers
- Annual compliance reports



Tree Seedlings

- **Seedlings at cost**
- **Genetic improvement**



Serving Landowners Our *Privilege*



Questions?

www.trees.sc.gov





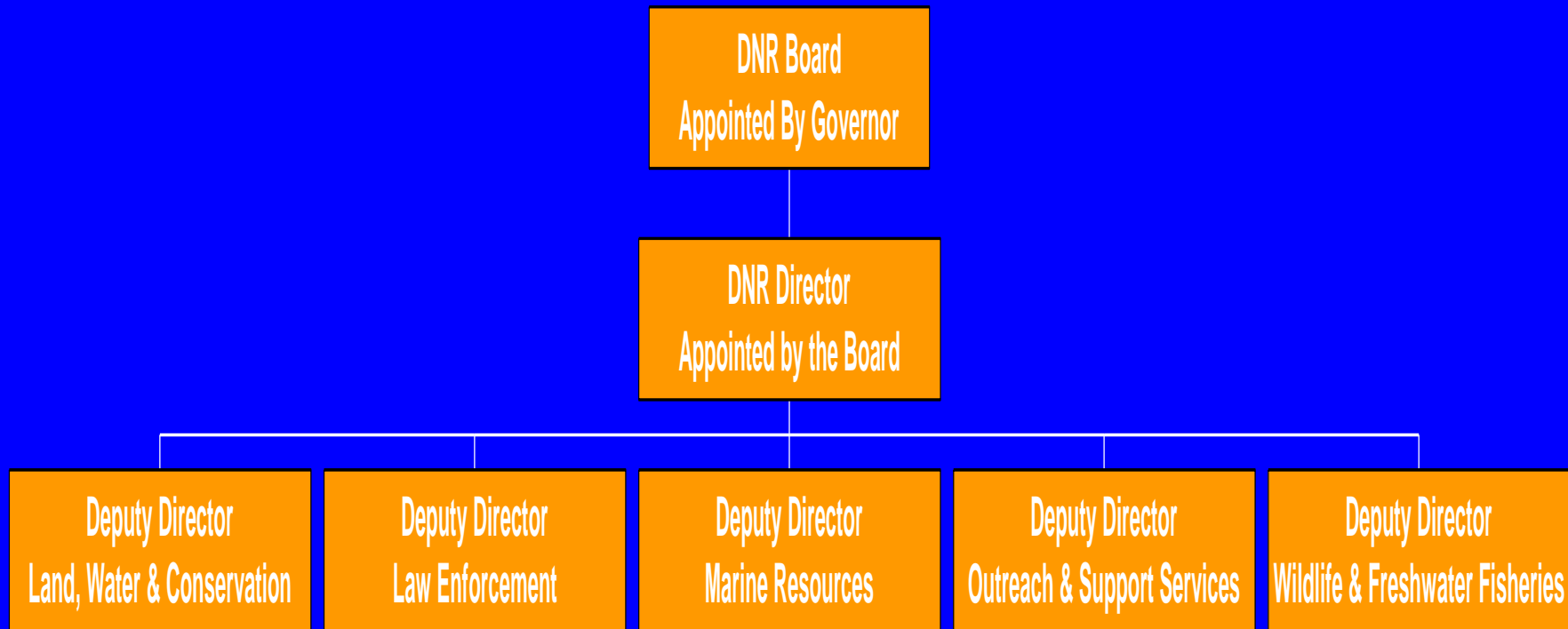
**Our Mission is to Serve as the
Principal Advocate for
and Steward of South Carolina's Natural
Resources**

South Carolina Department of Natural Resources

- Land, Water & Conservation
- Law Enforcement
- Marine Resources
- Outreach & Support Services
- Wildlife & Freshwater Fisheries



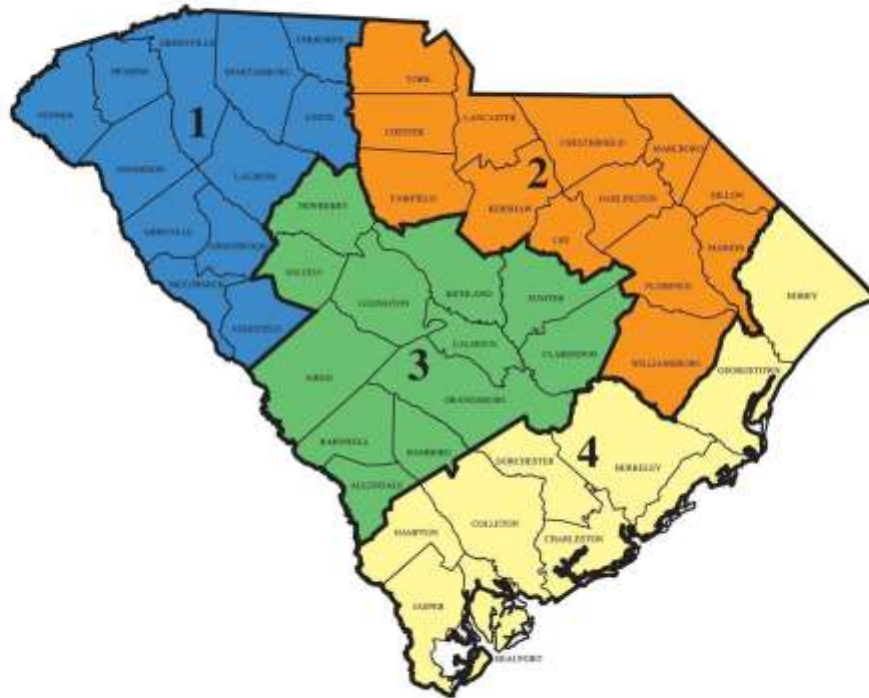
South Carolina Department of Natural Resources





DNR

SOUTH CAROLINA DNR REGIONS



Providing Technical Assistance to Landowners





THE SOUTH CAROLINA BOBWHITE INITIATIVE

RESTORING HABITAT FOR QUAIL AND GRASSLAND BIRDS

Bring Back the Whistle



**WE CARE ABOUT
CONSERVATION**

***USDA-Natural
Resources Conservation
Service***

Conservation Planning



Financial Assistance Programs

Environmental Quality Incentives Program (EQIP)

Conservation Stewardship Program (CSP)



Easement Programs

Agricultural Conservation Easement Program (ACEP)

Wetland Reserve Easement (WRE)



Agricultural Land Easement (ALE)

Top Three Takeaways....

1. NRCS offers FREE conservation planning to private landowners

2. Get to know your local NRCS staff

3. NRCS has financial assistance and easement program opportunities for eligible private landowners





United States Department of Agriculture

Farm Service Agency

*Serving America's
Agricultural Community
for More Than 80 Years*



FSA's World-Class Workforce: When and Where You Need Us

**11,000 +
dedicated
staff**

**51 state
offices**

**2,100
county
offices**





United States Department of Agriculture

GROW WITH US

**An interactive resource
for farmers, by farmers.**



FARMERS.GOV



FSA PROGRAM PORTFOLIO

FARM PROGRAMS

- SAFETY NET PROGRAMS
- CONSERVATION RESERVE PROGRAM
- ORGANIC CERTIFICATION COST SHARE PROGRAM
- MARKET FACILITATION PROGRAM

FARM LOANS

- DIRECT FARM OWNERSHIP AND OPERATING LOANS
- GUARANTEED FARM OWNERSHIP AND OPERATING LOANS
- DIRECT AND GUARANTEED MICROLOANS
- DIRECT EMERGENCY LOANS
- DIRECT YOUTH LOANS
- GUARANTEED CONSERVATION LOANS
- Etc.



United States Department of Agriculture

Market Facilitation Program (MFP)



Provides direct payments to producers who have been negatively impacted by foreign governments imposing tariffs on U.S. agricultural products



SAFETY NET PROGRAMS



Agriculture Risk Coverage (ARC) & Price Loss Coverage (PLC)

- ARC/PLC programs provide payments to farmers when the actual revenue for a covered commodity falls below expected revenue;
- For the 2016 crop year, the last year that payment data was available, the ARC and PLC programs provided 2.3 million payments to producers totaling just over \$7 billion.



2017 Wildfires and Hurricanes Indemnity Program (2017-WHIP)

- 2017-WHIP provides disaster payments to agricultural producers to offset losses from hurricanes and wildfires during 2017. It is a short-term program designed to respond to 2017 or 2018 losses.
- Congress has provided almost \$2 billion for this program and another \$340 million has been allocated to help the Florida citrus industry recover.



Noninsured Crop Disaster Assistance Program (NAP)

- NAP provides financial assistance to producers of non-insurable crops when low yields, loss of inventory, or prevented planting occur due to natural disasters;
- In 2017, the last year full payment data is available, NAP made 15, 136 payments for over \$162 million.

SAFETY NET PROGRAMS *(continued)*



Livestock Indemnity Program (LIP)

- LIP pays livestock producers for livestock deaths in excess of normal mortality or injury to livestock caused by an eligible adverse weather event or attacks by animals reintroduced into the wild by the Federal Government.
- In 2017, 3,581 claims were paid totaling nearly \$34.2 million.



Emergency Assistance for Livestock, Honey Bees, and Farm-raised Fish (ELAP)

- ELAP pays producers for losses due to disease, certain adverse weather events or conditions, including blizzards and wildfires, as determined by the Secretary.
- In 2017, there were 3,079 claims totaling almost \$40.8 million.



Tree Assistance Program (TAP), Emergency Conservation Program (ECP), Emergency Forest Restoration Program (EFRP)

- TAP provides financial assistance to eligible orchardists and nursery tree growers to replace or rehabilitate eligible trees, bushes and vines lost to natural disasters, including hurricanes and wildfires; ECP-restore cropland, debris removal, fences, conservation measures; EFRP-forestland



Margin Protection Program (MPP-Dairy)

- MPP-Dairy is a voluntary risk management program for dairy producers. It offers protection when the difference between the all milk price and the average feed cost (the margin) falls below a certain dollar amount selected by the producer.
- 21,274 dairy operations are enrolled. We've paid out nearly \$155 million so far this year.



United States Department of Agriculture

CONSERVATION RESERVE PROGRAM

ORGANIC CERTIFICATION COST SHARE PROGRAM



In 2017, FSA invested \$1.6 billion to help 375,000 Americans improve water quality, reduce soil erosion and increase wildlife habitats.

FARM LOAN PROGRAMS

- DIRECT FARM OWNERSHIP AND OPERATING LOANS
- GUARANTEED FARM OWNERSHIP AND OPERATING LOANS
- DIRECT AND GUARANTEED MICROLOANS
- DIRECT EMERGENCY LOANS
- DIRECT YOUTH LOANS
- GUARANTEED CONSERVATION LOANS
- FARM STORAGE FACILITY LOANS
- MARKETING ASSISTANCE LOANS



FSA has loan programs and business tools to match your specific needs

FARM LOAN PROGRAMS *(continued)*



Direct Operating Loans

- Used to purchase items such as livestock and feed, seed, farm equipment, fuel, insurance; pay for family living expenses; make minor improvements or repairs to buildings and fencing; and pay for general farm operating expenses. \$300,000 loan limit with a maximum 7-year term.
- In FY 2017, 22,940 loans were made with a principal value of \$1.28 billion.



Microloans

- Can be used by any farmer and rancher. They are especially designed to meet the needs of small and beginning farmers, non-traditional, specialty crop and niche type operations by easing some requirements and offering less paperwork.
- \$50,000 loan limit and maximum 25-year term for purchasing a farm, constructing buildings or making other capital improvements, undertaking soil and water conservation, and operational expenses.
- In FY2017, more than 6,600 direct farm ownership and farm operating microloans were made to beginning, minority, female and military veteran farmers and ranchers, with a principal value of \$160.9 million.



Direct Farm Ownership Loans

- Can be used to purchase or expand a farm or ranch, construct new or improve existing farm or ranch buildings, and pay for soil and water conservation and protection purposes. There is a \$300,000 loan limit with a maximum 40-year term.
- In FY 2017, 5,740 loans were made with a principal value of \$1.04 billion.

FARM LOAN PROGRAMS *(continued)*

Guaranteed Loans



- Commercial lenders extend credit to family farm operators and owners who do not qualify for standard commercial loans. Farmers receive credit at reasonable terms to finance their current operations or to expand their business; financial institutions receive additional loan business and servicing fees, as well as other benefits from the program, such as protection from loss, up to 95 percent.

Youth Loans



- Can be used by young people ages 10-20 years old who participate in 4-H clubs, FFA or a similar organization, to finance educational, income-producing, agriculture-related projects. \$5,000 loan limit with a maximum 7-year term.

Minority & Women Farmers and Ranchers



- FSA supports the full participation of minority and women family farmers in loan programs by targeting a portion of its direct and guaranteed farm ownership and operating loan funds for minority and women farmers to buy and operate a farm or ranch.

Beginning Farmers and Ranchers



- These loans provide credit opportunities to eligible family farm and ranch operators and owners who have been in business less than 10 years.



FARM LOAN PROGRAMS



Farm Storage Facility Loans

- These loans provide credit opportunities to eligible family farm and ranch operators and owners who have been in business less than 10 years.



Marketing Assistance Loans

These loans provide interim financing at harvest time to help agricultural producers to meet cash flow needs without having to sell their commodities when market prices are typically at harvest-time lows.



Emergency Loans

- Help farmers and ranchers recover from production and physical losses due to drought, flooding, other natural disasters or quarantine.
- In FY2017, 124 loans were made, valued at \$15.1 million in principal. Borrowers may use Farm Ownership and Operating Loans instead of Emergency Loans due to reduced paperwork and lower interest rates.

Summary:

- For more than 80 years, FSA has delivered on USDA's promise to do right and feed everyone;
- Our customers are our number one priority – we're there when and where they need us;
- FSA will continue to build upon our robust programs to meet customer needs.

Questions?



es Department of Agriculture

U.S. Department of Labor

Wage and Hour division

1835 Assembly Street, Room 1072

Columbia, SC 29201



Colin Trimble
Community Outreach and
Resource Planning
Specialist
Phone/Fax: (803) 343-
6851
Mobile: (803) 496-6583
trimble.colin@dol.gov

Luis Medina
Wage and Hour
Investigator