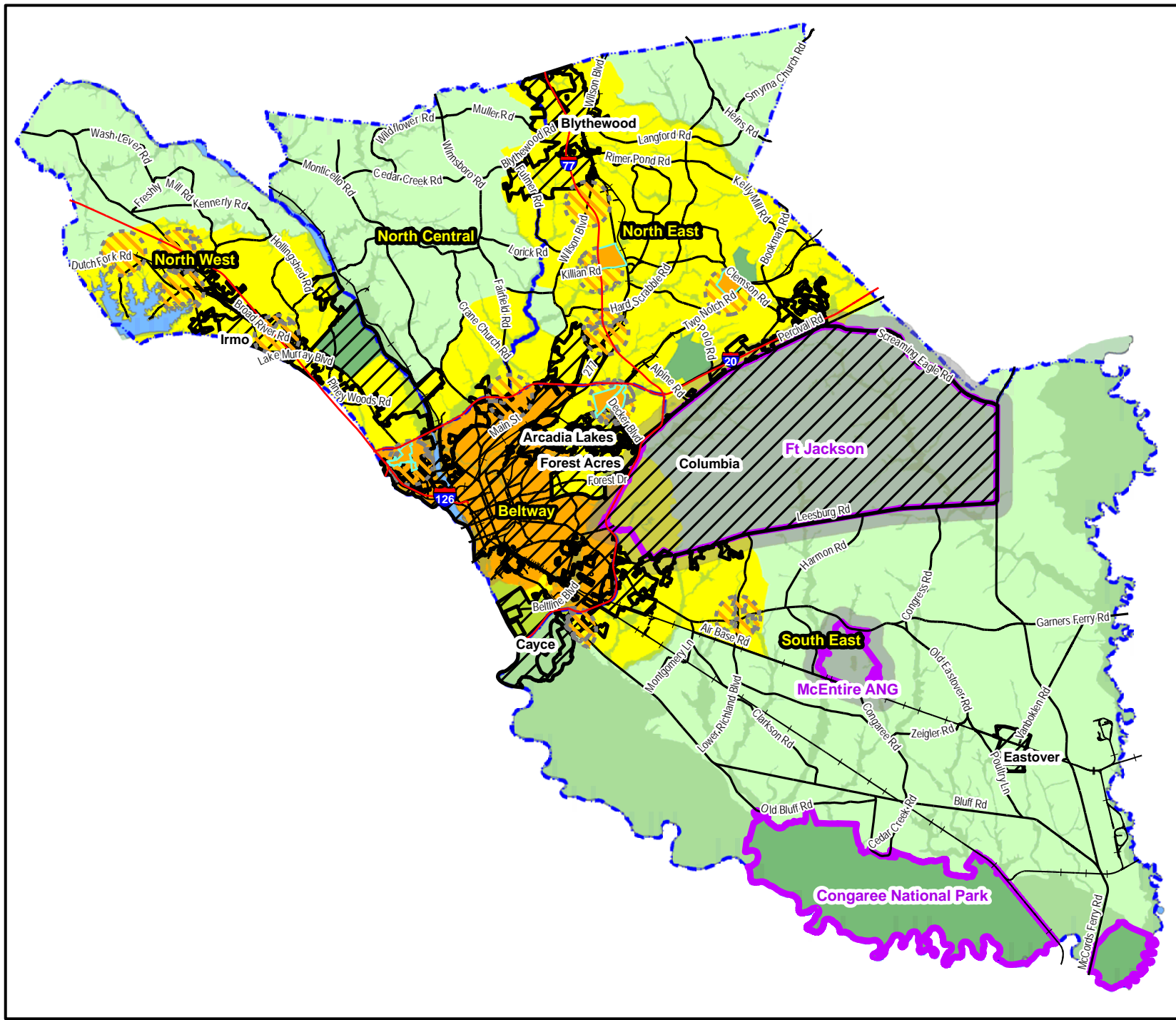
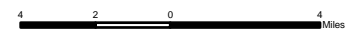




Richland County Future Land Use Map

12/15/2009

-  Urban Villages
-  Priority Investment Areas
-  Municipalities
-  Federal Lands
-  3000 Ft Military Buffer
-  Planning Areas
-  Conservation
-  Rural
-  Suburban
-  Urban



This map is a product of the Richland County Planning & Development Services Department. The data depicted here have been developed with extensive cooperation from other County Departments, as well as other federal, state and local government agencies. Reasonable efforts have been made to ensure the accuracy of this map. Richland County expressly disclaims responsibility for damages or liability that may arise from the use of this map.

PROPRIETARY INFORMATION: Any resale of this information is prohibited, except in accordance with a sublicensing agreement.

Copyright: Richland County Government, 2020 Hampton Street, Columbia, SC 29204
June 2007 - Brenda Garner, GIS Manager