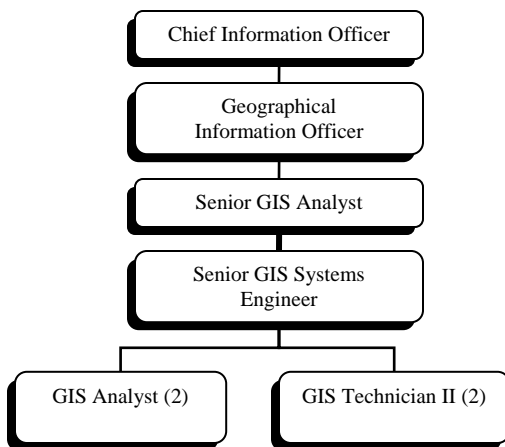


## Geographical Information Systems (GIS)

### Mission

To establish a foundation of geographic information to support community decision-making. The GIS program will provide the technological vision and leadership to deploy appropriate spatial technologies that will contribute towards an enriched community. Hereby, we will reinvent, reengineer, and streamline government wherever spatial technology can contribute towards increased efficiencies and effectiveness.

### Organization Chart



### Goals and Objectives

- Build a framework of fundamental geographic data elements for use in a County government GIS.
- Coordinate most GIS activities and data concerning Richland County and ensure that geographic information related services are delivered effectively and in a timely manner.
- Make geographic and related information available to citizens while protecting county investments in data development
- Empower County employees and citizens by providing appropriate tools for the retrieval and analysis of spatial data for use in answering practical, policy, and political questions.
- Foster data sharing partnerships with both governmental and private sector entities to facilitate the County's involvement in geographically-related initiatives.

### Performance Measures

Measure	FY05	FY06	FY07
Average # of website "hits" per day	63,014	72,650	82,286
Average # of website unique visits per day	164	197	230
Annual # of data/map orders via Internet	70	95	120
Operating Cost per \$1 revenue generated	\$3.35	\$3.54	\$4.45

## Geographical Information Systems (GIS)

### Fiscal Plan

	FY 2005 Actual	FY 2006 Adopted	FY 2007 Adopted	\$ Change
Personal Services	\$16,939	\$44,628	\$44,628	-
Operating Expenditures	120,749	179,995	178,001	(1,994)
Capital Outlay	-	-	-	-
<b>Total</b>	<b>\$137,688</b>	<b>\$224,623</b>	<b>\$222,629</b>	<b>\$(1,994)</b>

### Budget Highlights

GIS is funded through the Countywide General Fund. The expenditures roll up into the Administrative & Staff Services sub-category for reporting purposes.

Operating costs are projected to continue with a slight growth until the system is fully operational, which will require a material change in funding. The county is currently evaluating funding alternatives.

The FY07 budget reflects funding at a continuation level.

Below is a five-year projection of operating cost:

FY08	\$240,905
FY09	\$312,838
FY10	\$495,338
FY11	\$583,883
FY12	\$637,521